

Refreshing the report

'Reporting Date': enter the date 12 months prior to today's date.

Exclusions

The following position types are excluded: Service Providers, Volunteers and Social Services Panel Members, in addition to occupants of positions with a category of 'Non-Employee' (e.g. ABHB and Barnardos employees)

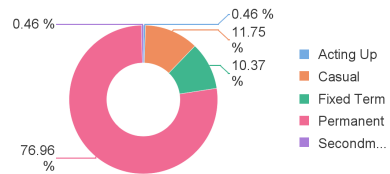
Format

The report output is designed to be exported and viewed as a PDF.

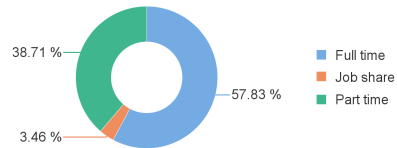
Demographics

Headcount	FTE (Total)	Average LoS (Years)	Turnover Rate (12 Months)
406	344.36	7	12.32%

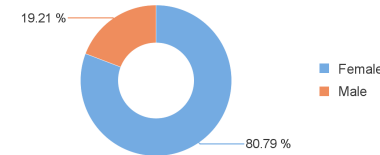
Contract Type



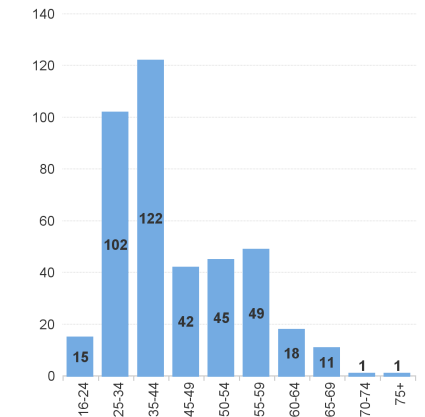
Contract Basis



Gender



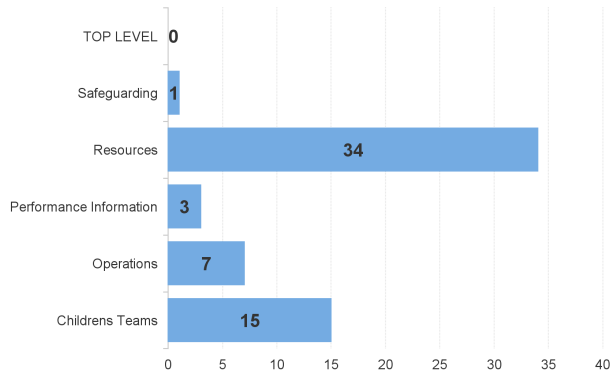
Age Groups



Acting Up	Casual	Fixed Term	Permanent	Secondm...	Full time	Job share	Part time
2	51	45	334	2	251	15	168

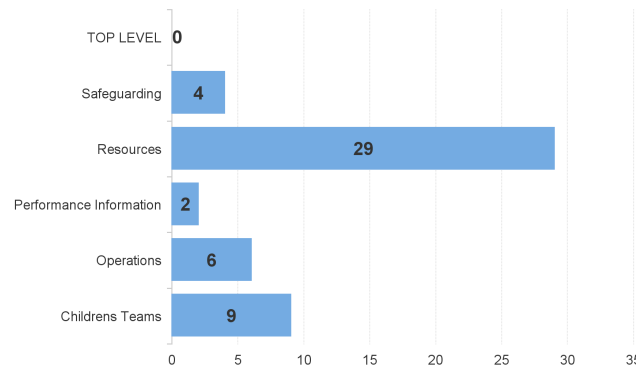
Female	Male
328	78

Starters in Previous 12 Months by Team



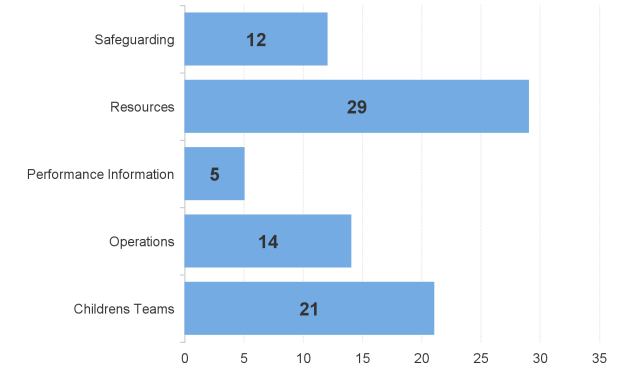
Starters
60

Leavers in Previous 12 Months by Team



Leavers
50

Recruitment in Previous 12 Months by Team



Recruitment Campaigns
75

Wellbeing

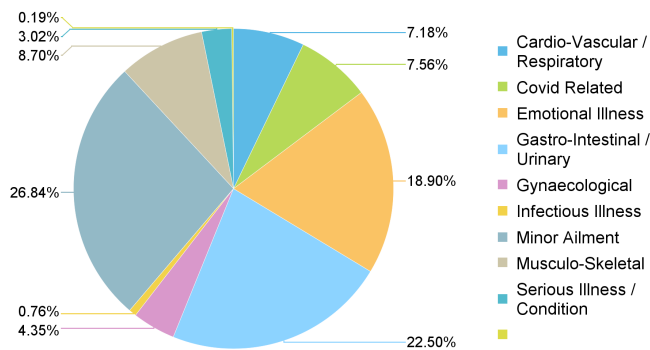
Headcount
406

Sickness

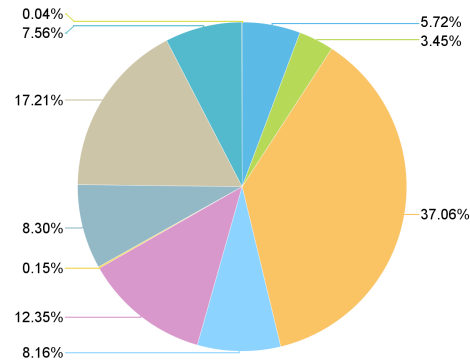
Sickness Instances (Previous Month)	Sickness Instances (Previous 12 Months)	Sickness Days Lost (Previous Month)	Sickness Days Lost (Previous 12 Months)
62	529	349.11	5,423.93
12 Months Ago		12 Months Ago	
68		469.96	

Current Open Sickness Absences	% RTW Within 7 Days (Previous 12 Months)
18	65.36%

Instances by Reason Group (Previous 12 Months)



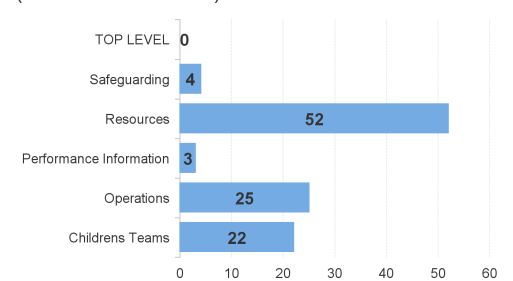
Days Lost by Reason Group (Previous 12 Months)



Wellbeing Check-Ins (Non-Schools)

Wellbeing Check-Ins (Previous 12 Months)
106

Wellbeing Check-Ins by Team (Previous 12 Months)



Team	Check-Ins
TOP LEVEL	0
Safeguarding	4
Resources	52
Performance Information	3
Operations	25
Childrens Teams	22

Wellbeing Check-Ins (Schools)

Wellbeing Check-Ins (Previous 12 Months)
0

Wellbeing Check-Ins by Teaching / Support (Previous 12 Months)

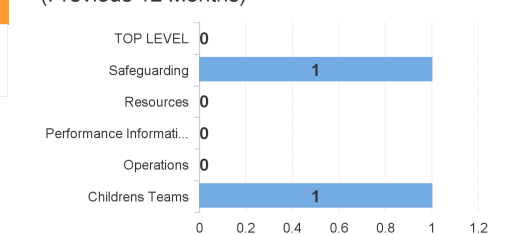


Team	Check-Ins
TOP LEVEL	0
Safeguarding	0
Resources	0
Performance Information	0
Operations	0
Childrens Teams	0

Wellbeing Support Plans

Wellbeing Support Plans (Previous 12 Months)
2

Wellbeing Support Plans by Team (Previous 12 Months)



Team	Support Plans
TOP LEVEL	0
Safeguarding	1
Resources	0
Performance Information	0
Operations	0
Childrens Teams	1

Mandatory Training

Headcount
406

Completed in the required period for each course.

All Employees

Whistleblowing Previous 2 Years 146	Safeguarding Previous 2 Years 155	GDPR Previous 2 Years 114	VAWDASV Previous 2 Years 130	DSE Previous 2 Years 136	Fire Safety Awareness Previous 2 Years 113
Wellness at Work Previous 2 Years 3	Welsh History & Legislative Previous 2 Years 33	Information Security Previous 2 Years 60	Object Handling Previous 3 Years 8		

Managers Only

H&S Premises Management Previous 2 Years 10	IOSH Managing Safely Previous 4 Years 45
--	---

Financial

Purchase Card Previous 2 Years 95	Financial Regulations Previous 3 Years 23
--	--

Other

Risk Assessment Previous 4 Years 41
--

Exclusion criteria match MiHub, although figures are unlikely to match exactly: MiHub displays discrete periods, whereas the figures below are 'live'.

Eligible Headcount

370

Check-Ins

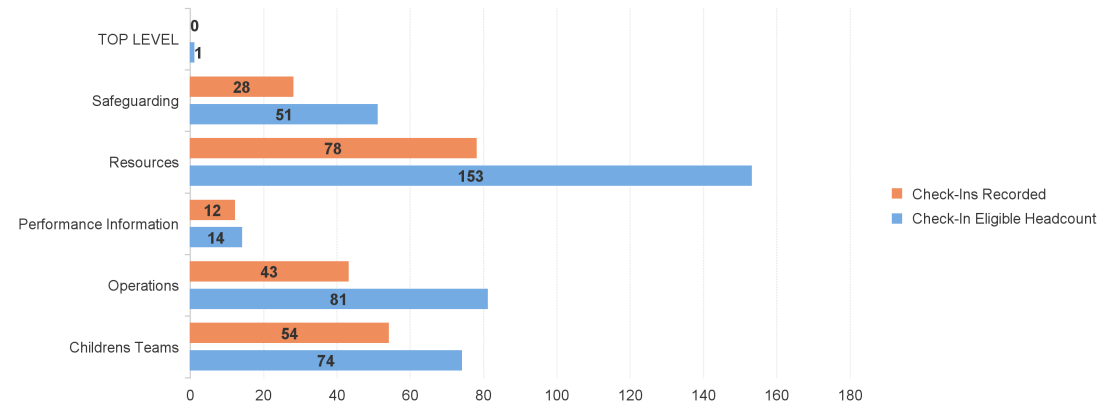
Check-ins Recorded
(Previous 2 Months)

215

Percentage Recorded
(Previous 2 Months)

58.11%

Check-Ins by Team (Previous 2 Months)



Objectives

Currently Active
Objectives

443

Employees with
No Active Objectives

192

Closed Objectives
(Previous Month)

0

Closed in Timescale
(Previous Month)

0

Currently Active Objectives by Team

